



/

603063

/

5kW 8kW 8kW 33kW 36kW 50kW 60kW 125kW
 DC1500V 225kW 350kW WiFi /GPRS /4G

1100V 500kW 630kW 800kW 1500V 2500kW 3125kW

1100V 1000kW 1250kW 1MW 1.25MW 2MW 2.5MW

4MW 5MW

186kW 250kW



CNAS



1500V 04

1100V 06

1100V 08

..... 10

..... 12

—— 2.5MW 14

35kV/10kV 16

..... 18

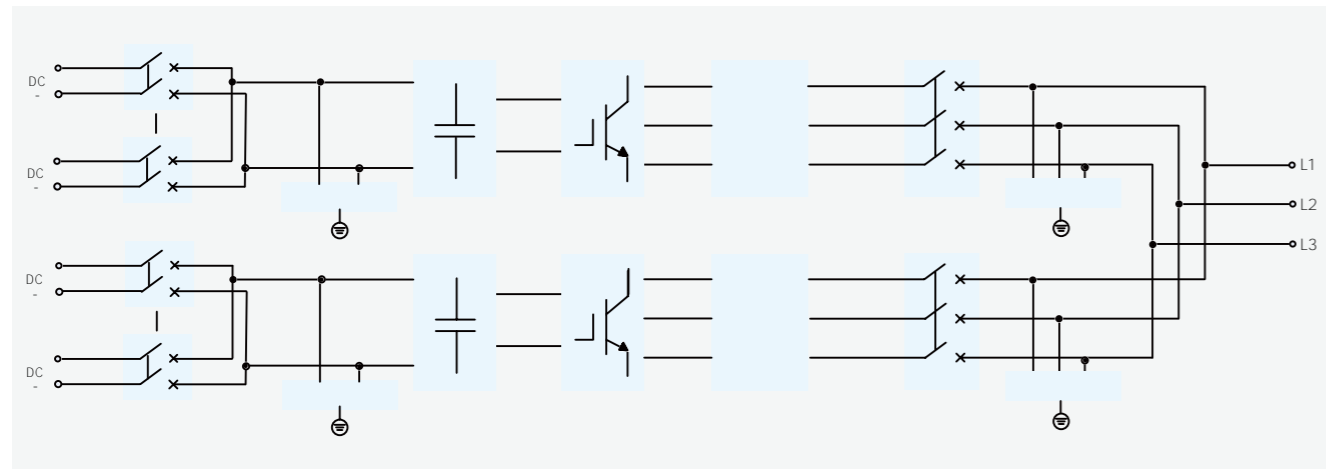
..... 19

..... 20

..... 21



- 2.5MW 3.125MW
- MPPT 99.11%
- SVG MPPT
- 1500V 550V/600V/630V
- HVRT/LVRT 1500V
- IP55



2500kW 3125kW/DC1500V

	HPHV2500-550	HPHV2500-630	HPHV3125-550	HPHV3125-600	HPHV3125-630
MPPT	800V 1450V				
	1500V				
	12	24	/ 18	16	14 24 / 22 16
	400A				
	2500kW		3125kW		
	2750kW		3438kW		
	2624A	2292A	3280A	3008A	2864A
	2886A	2522A	3608A	3309A	3150A
	550V	630V	550V	600V	630V
	440V 632V	504V 724V	440V 632V	480V 690V	504V 724V
	50Hz / 60Hz				
	±3Hz				
THD	3%				
	0.5%				
	0.8		0.8		
	99.02%	99.04%	99.01%	99.11%	
	98.49%		98.62%		
	100W				
	IP55				
	40	55	40		
	40		70		
	5000m	4000m			
	0%		95%		
	RS485 Ethernet				
* *	1710*2505*1700mm				
	2700kg				

4000m





MPPT

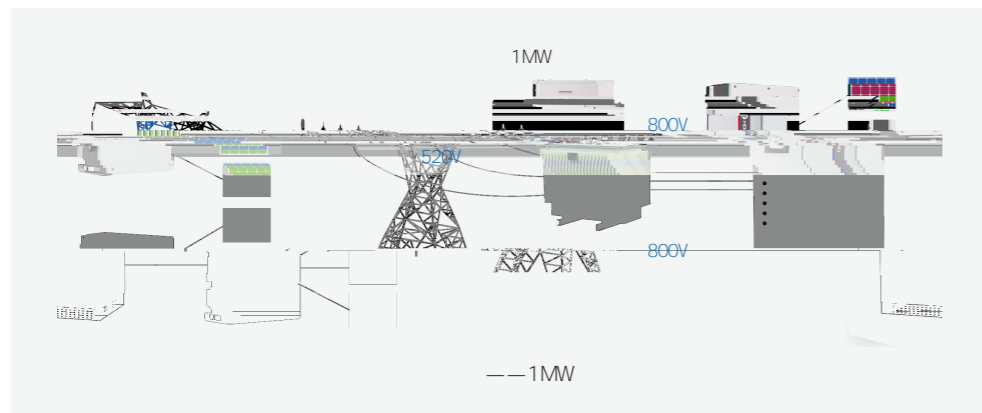
2 PV

1 MPPT

DC/DC

800V

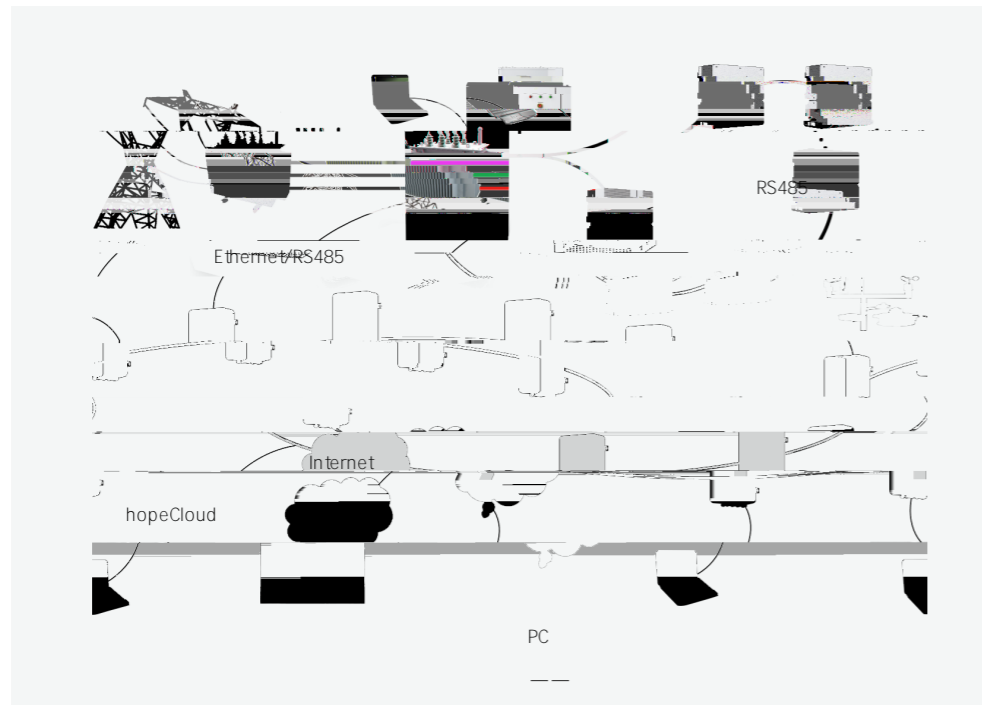
520V



RS485

Ethernet RS485

RS485



MPPT

2 PV

1 MPPT

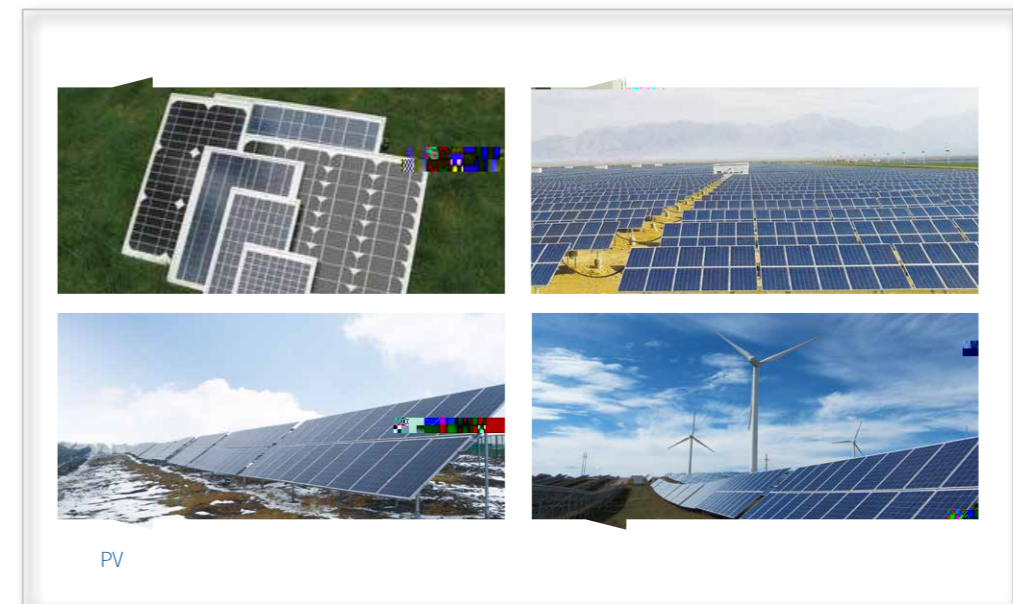
1MW

80 128 MPPT MPPT

1100V

1500V

10



PV

500V 800V

800V

270V/315V

520V

1MW

500kW

500kW

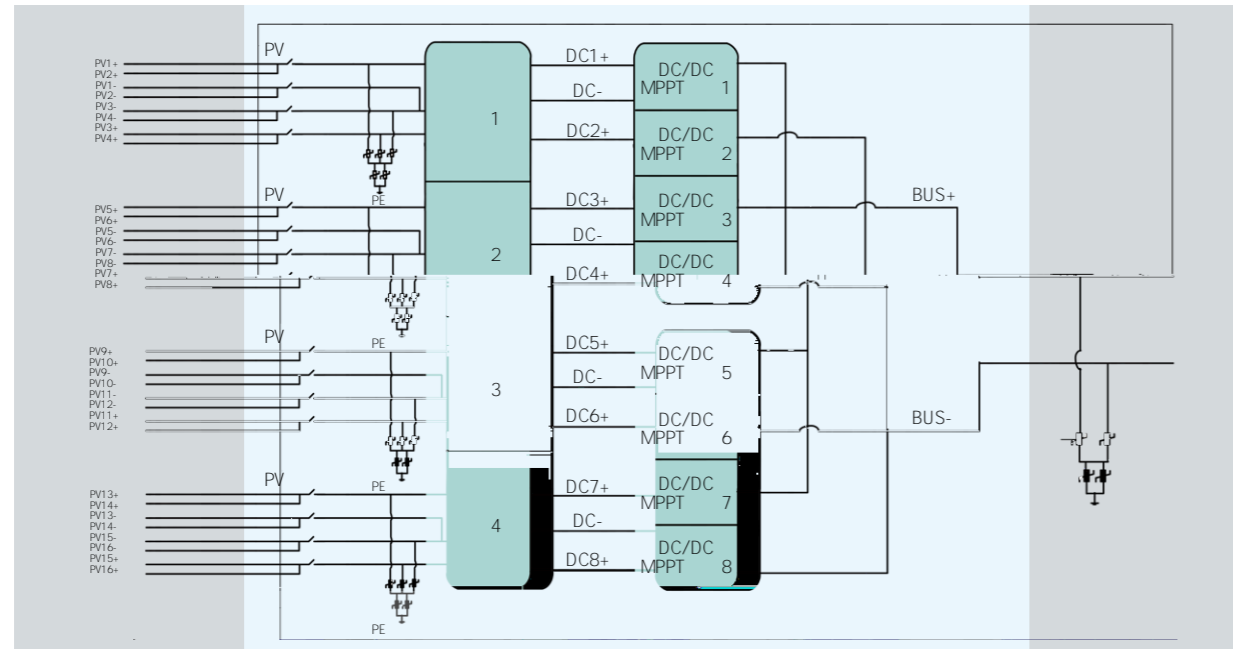
1MW

	270V/315V	520V	0.2% ↑
	500V 800V	800V	0.4% ↑
	500kW*2	1MW*1	0.8% ↑
	Total		1.4% ↑



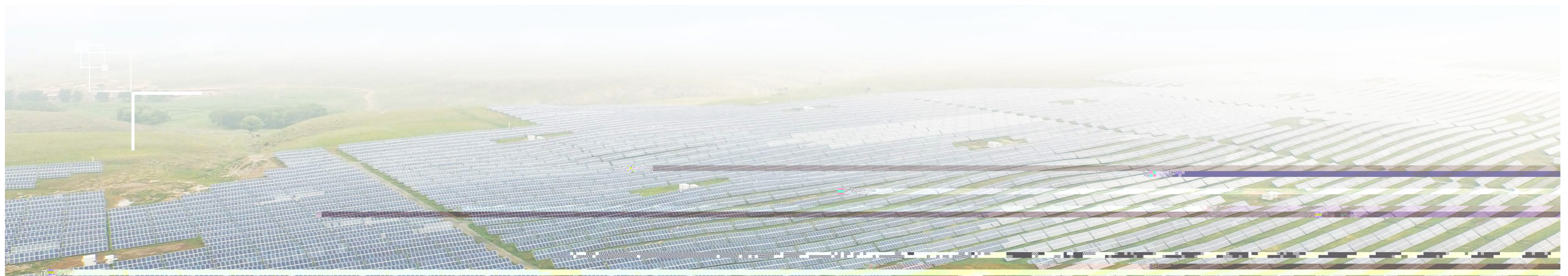
1%

- MPPT
- IP65
- PV
- 2 PV 1 MPPT
- DC/DC



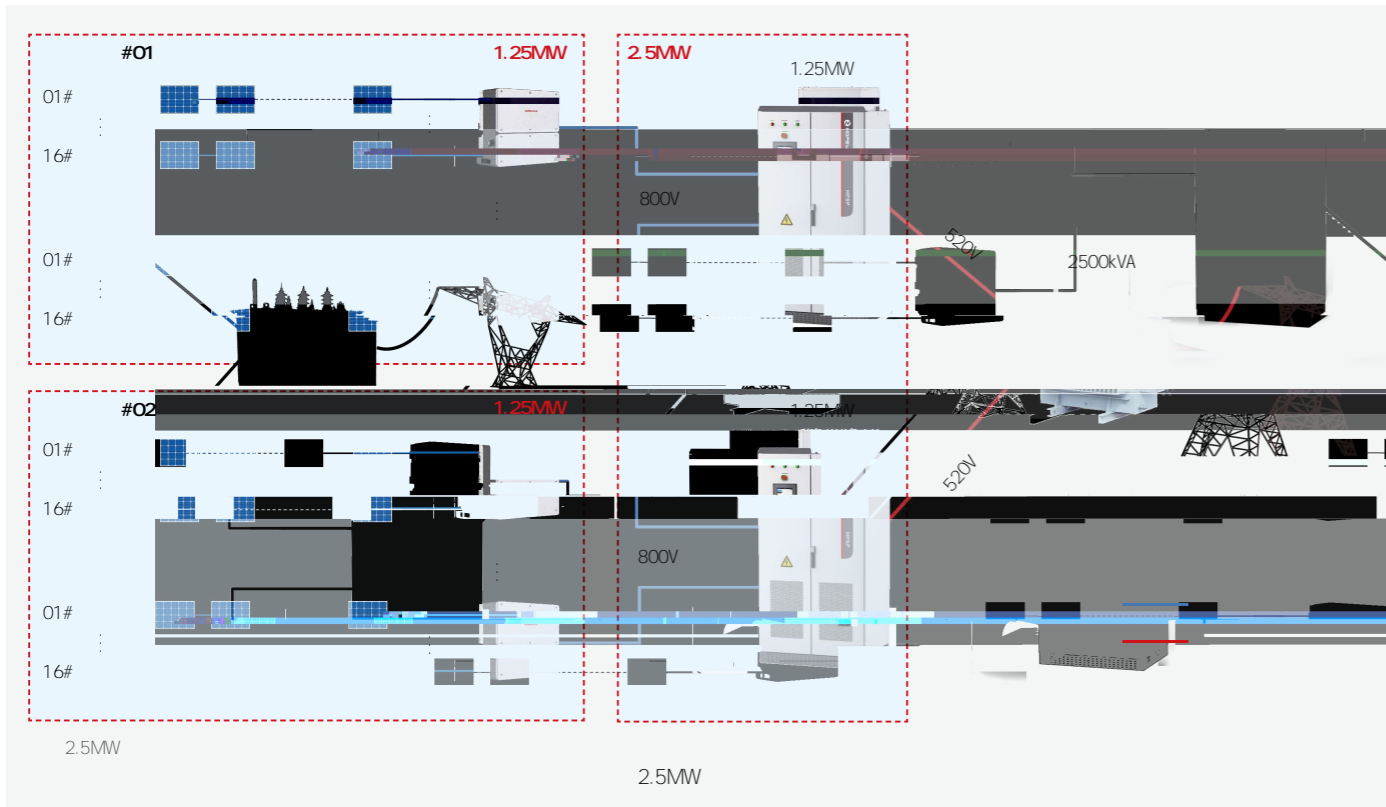
	HPPCU160-16-D	HPPCU160-16	HPPCU120-12	HPPCU80-8
	1100V			
MPPT	300V 850V			
	16	12	8	
	12A	9A		
	13A	10A		
	800V			
	165A	120A	90A	60A
	181.5A	132A	99A	72A
	99.7%	99.7%	99.6%	99.5%
	99.6%	99.6%	99.5%	99.4%
MPPT	8	8	6	4
	IP65			
		40 55		
		40 70		
		5% 95%		
	RS485			
	**	550*530*280mm	550*530*280mm	550*530*280mm
		42kg	40kg	30kg

-D

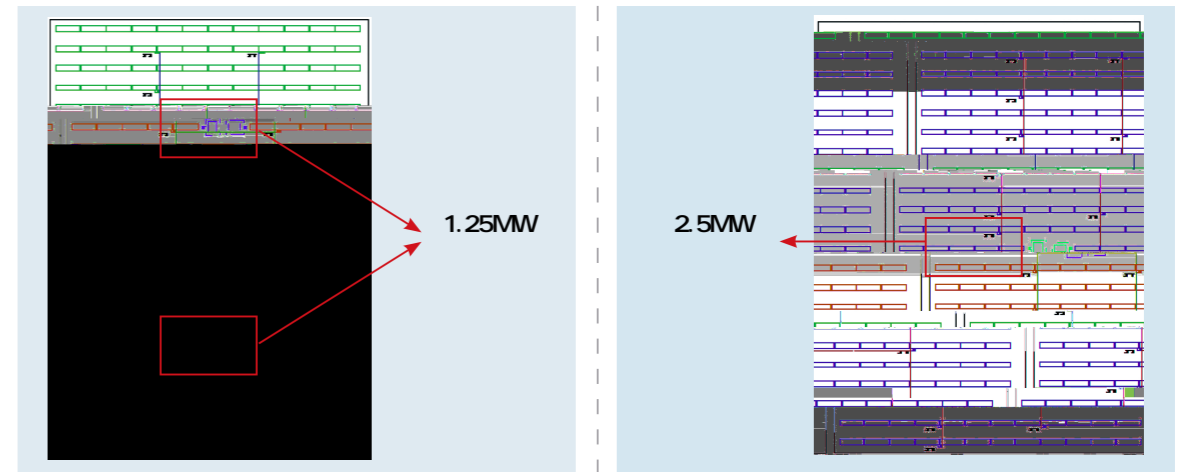


PV 22 30 2 1.25MW 1 2500kVA

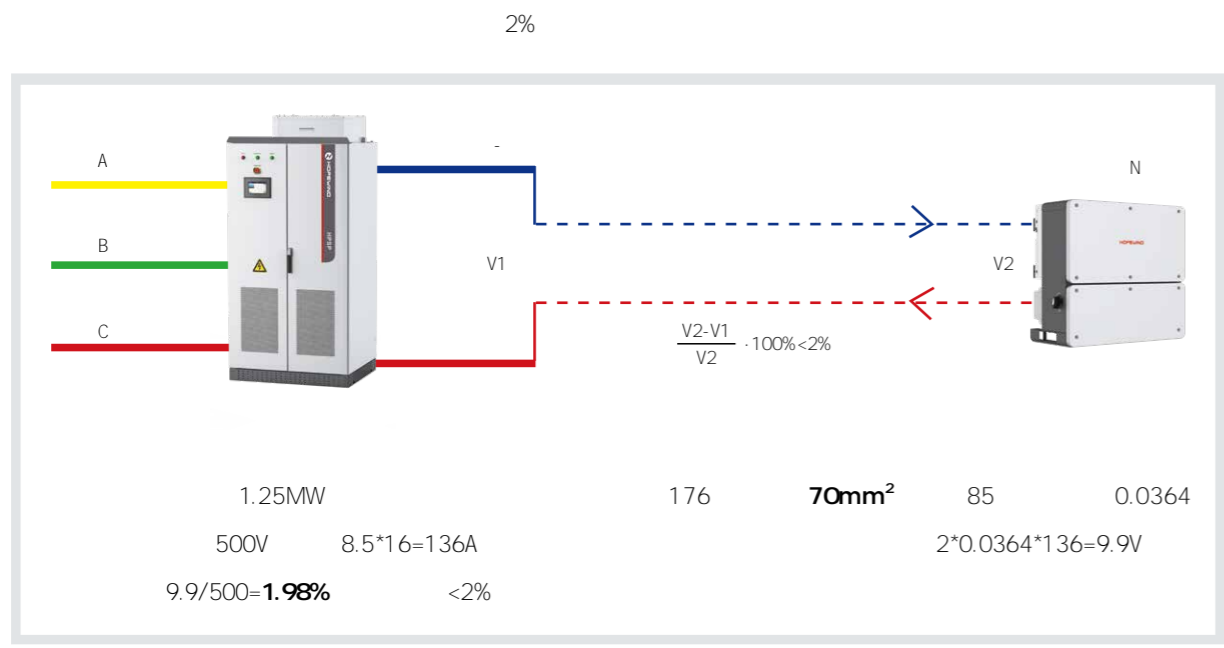
800Vdc 1.5 2/3



1.5 1.25MW 4/9 70mm² 2.5MW / 2.5MW 9/4 1.25MW 35mm² 2.5MW 2/3 50mm² 1.25MW



2 1.25MW 2.5MW 5.6 /W



		AC		DC			/W	
2.5MW	2	-1.0	-11.0	-3.0	+6.0	-2.0	-3.0	5.6
1.25MW		14						





1

AC

2

20

3

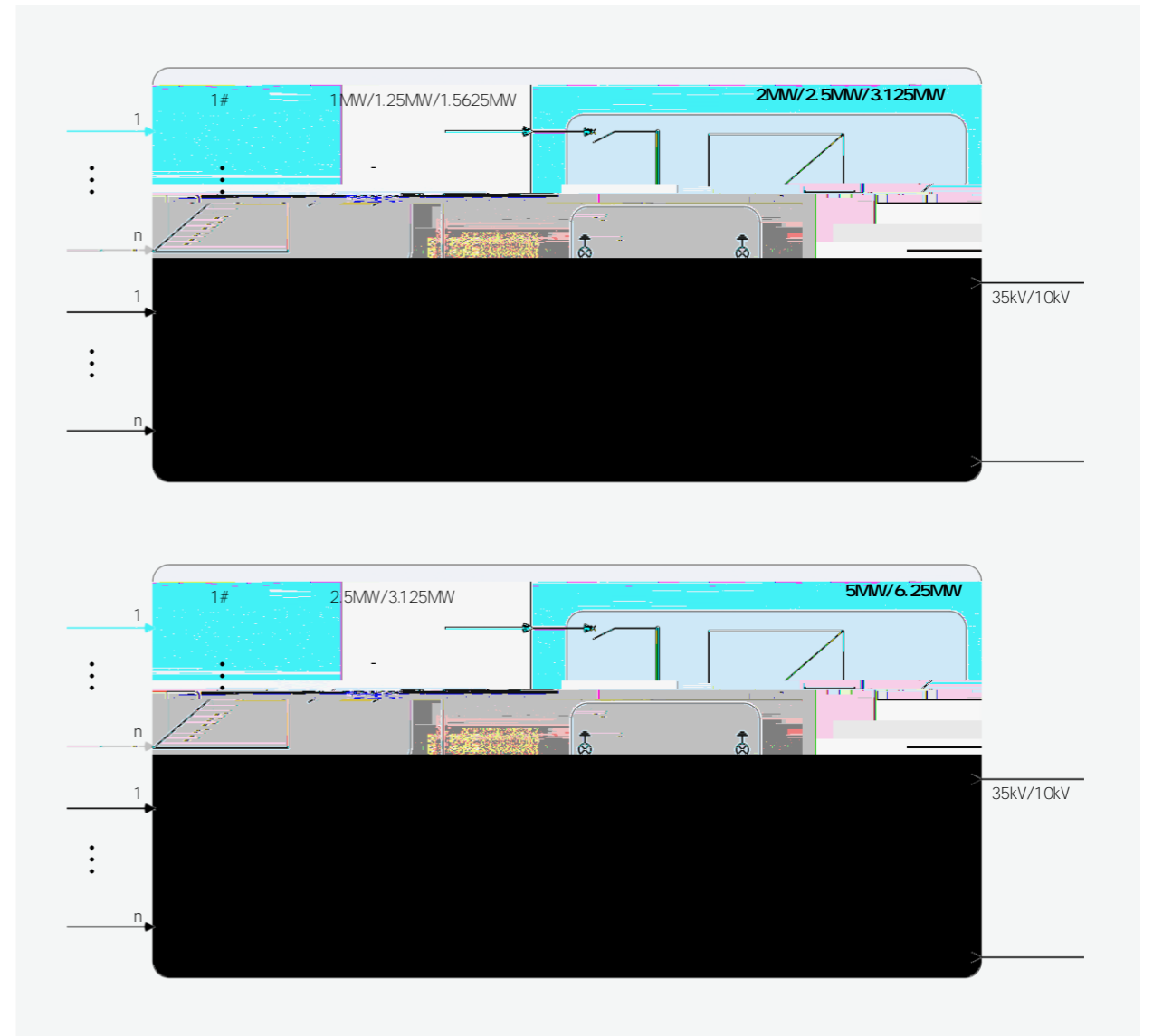
MW

AC

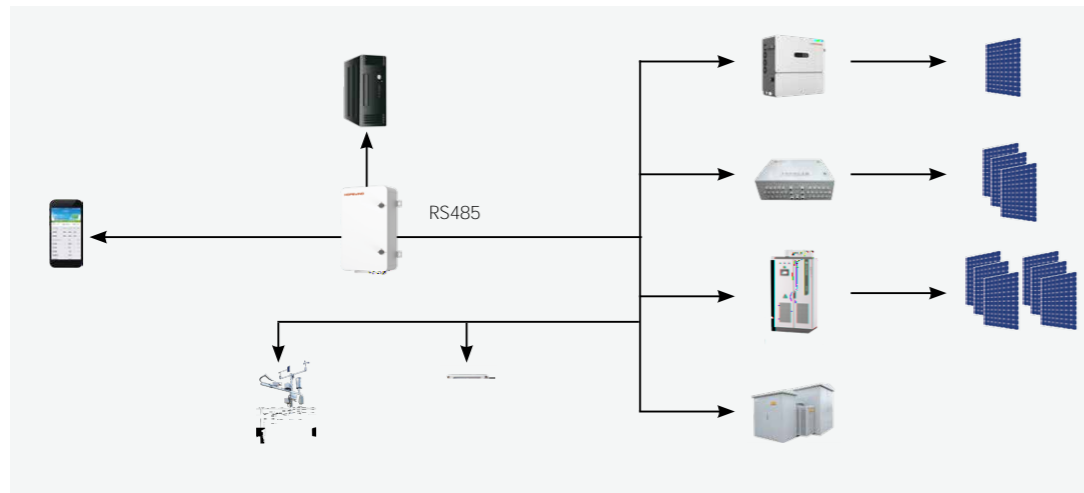
25%



		HPPS1000-G HPPS1250-G	HPPS1562.5-G HPPS2000-G	HPPS2500-G HPPS3125-G HPPS4000-G	HPPS5000-G HPPS6250-G
		HPPS1000-Y HPPS1250-Y	HPPS1562.5-Y HPPS2000-Y	HPPS2500-Y HPPS3125-Y HPPS4000-Y	HPPS5000-Y HPPS6250-Y
		1MW / 1.25MW	1.5625MW / 2MW	2.5MW / 3.125MW / 4MW	5MW / 6.25MW
		320V / 360V / 520V / 550V / 600V / 630V			550V / 600V / 630V
		10kV / 35kV			
		/			
	CT PT				
35kV * *		5000*2600*2500mm		9000*2800*2600mm	
		3900*2600*2500mm		7800*2800*2600mm	
		11000kg	16000kg	18000kg	
		8500kg	13000kg	14000kg	



- Linux
- AGC AVC
- Web
- 512MB DDR
- RS485
- IEC104 Modbus-TCP Modbus-RTU Goose MMS



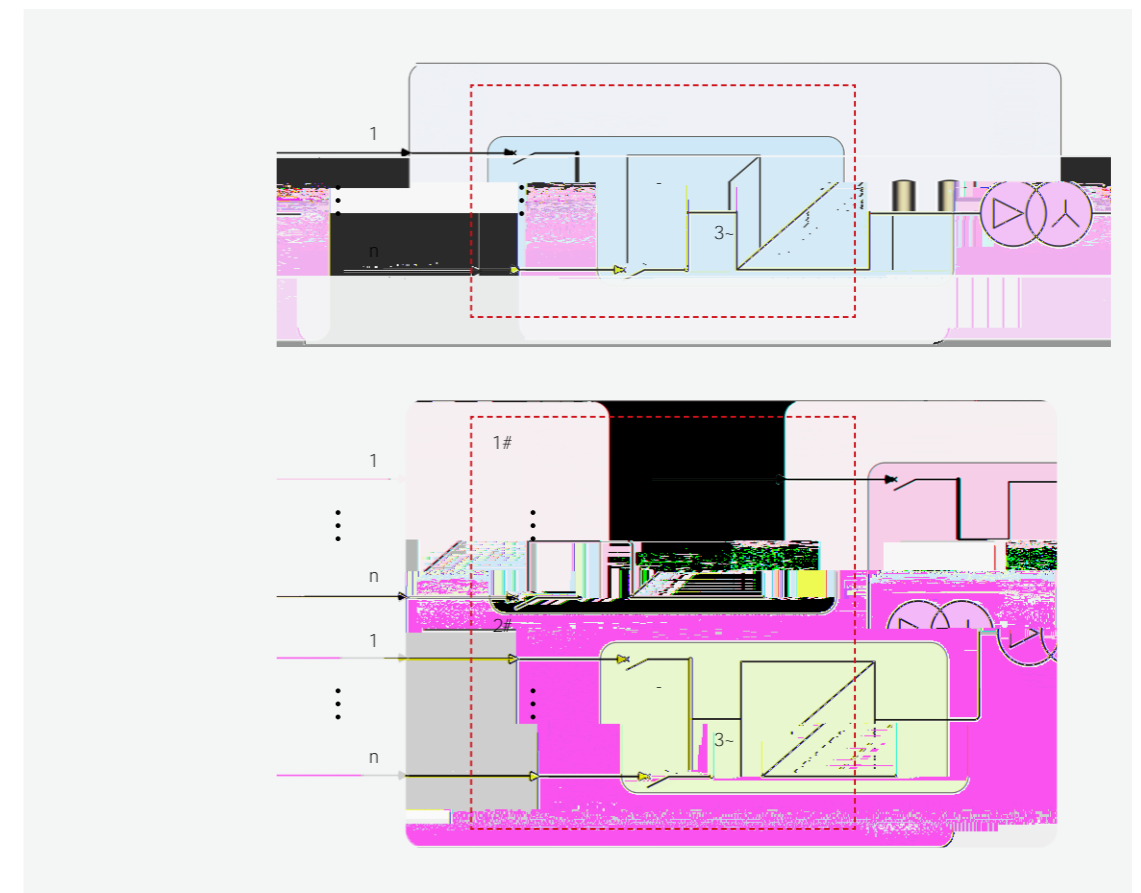
hopeComBox3000-D03	
	120
	RS485 RJ45 SFP
	2 3
	4 24 SC
RS485	COM×8
	ETH×2
	SFP×2
	220VAC 50/60Hz
	L+N+PE
	-40 +65
	-40 +70
	5~95%
	4000m
	IP65
* *	430*670*175mm
	15kg

±10mm

- IP54



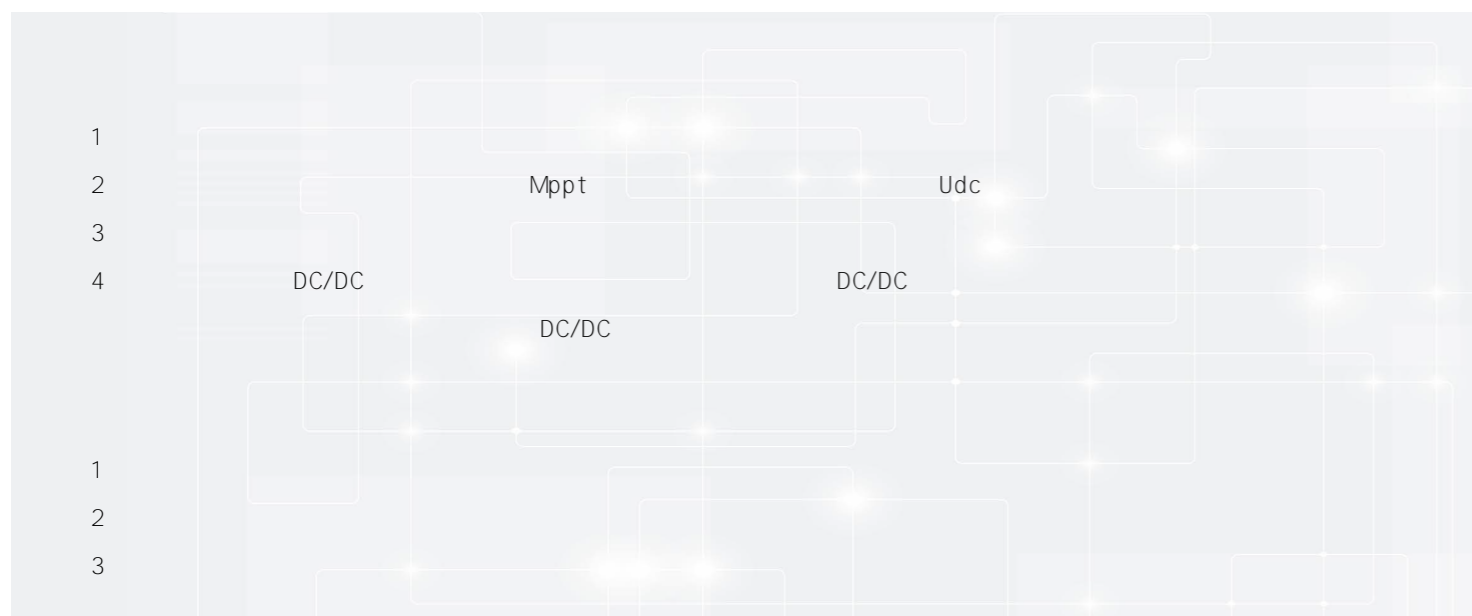
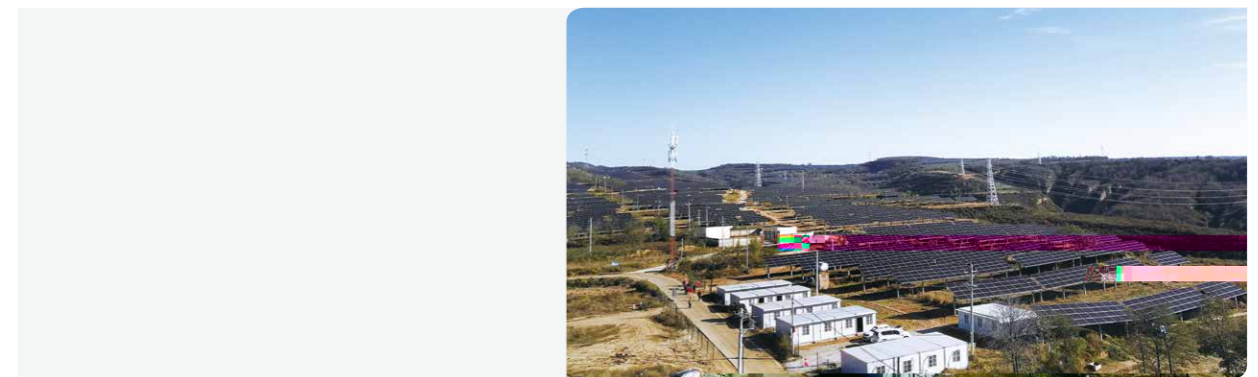
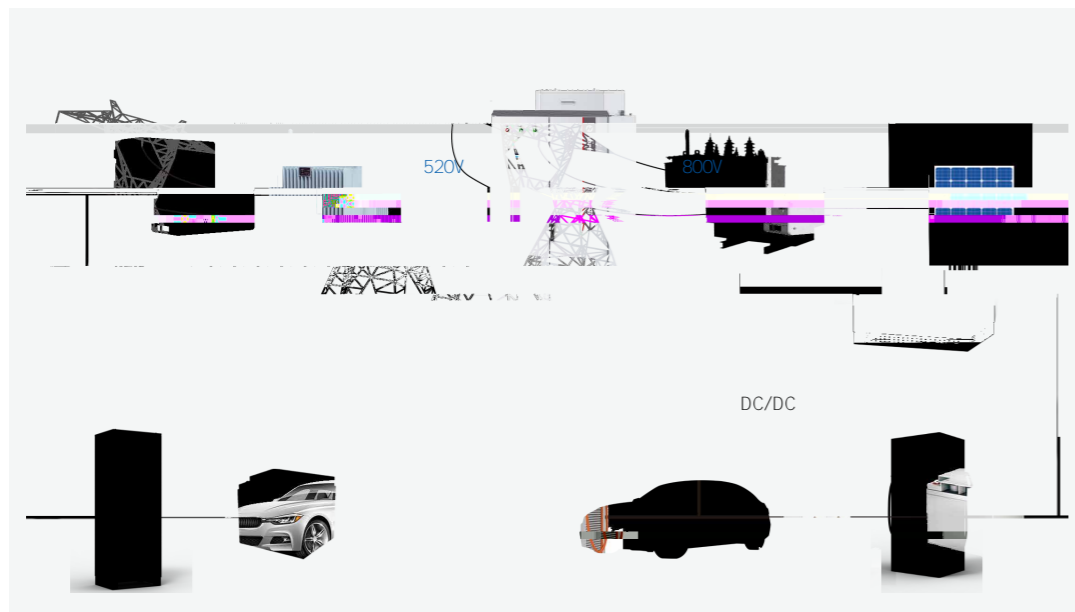
	DC1100V	DC1100V	DC1500V
* *	1500*2500*1100mm	1500*2500*2438mm	2100*2523*2438mm
	2000kg	3000kg	4500kg

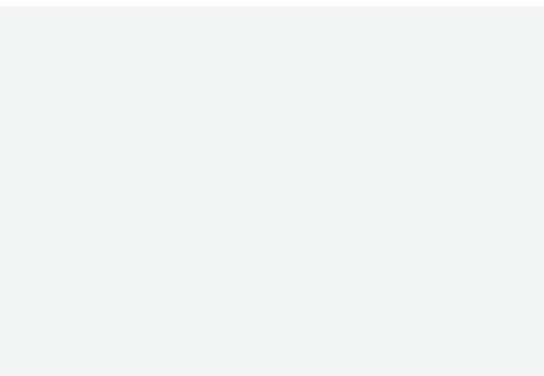
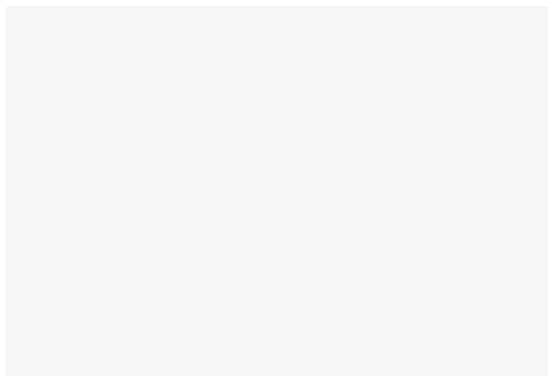
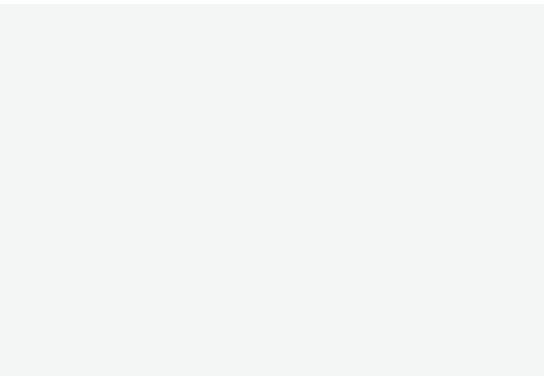
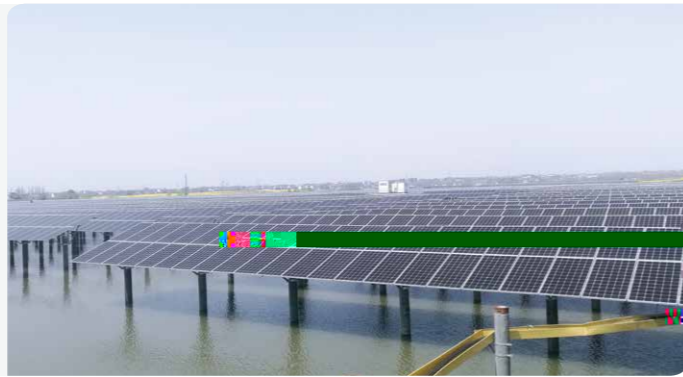
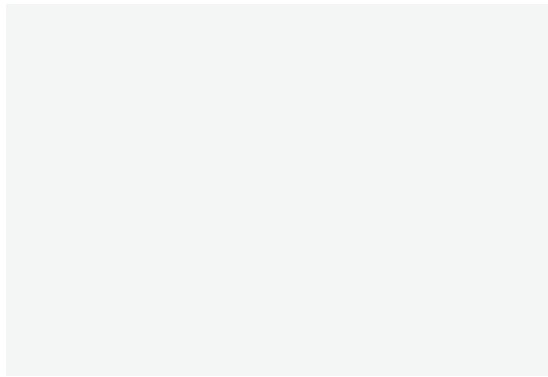
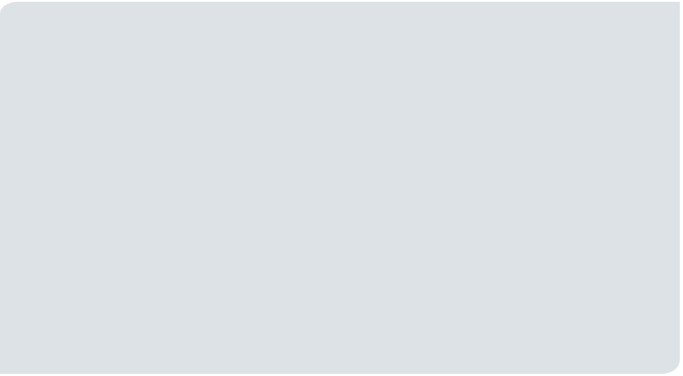
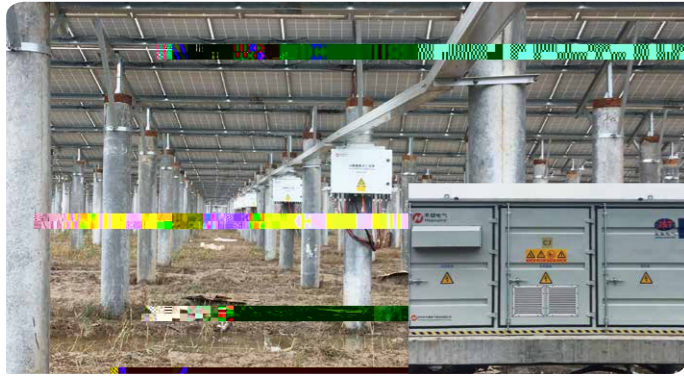


PV

RS485

DC/DC





风禾尽起 志望千里

